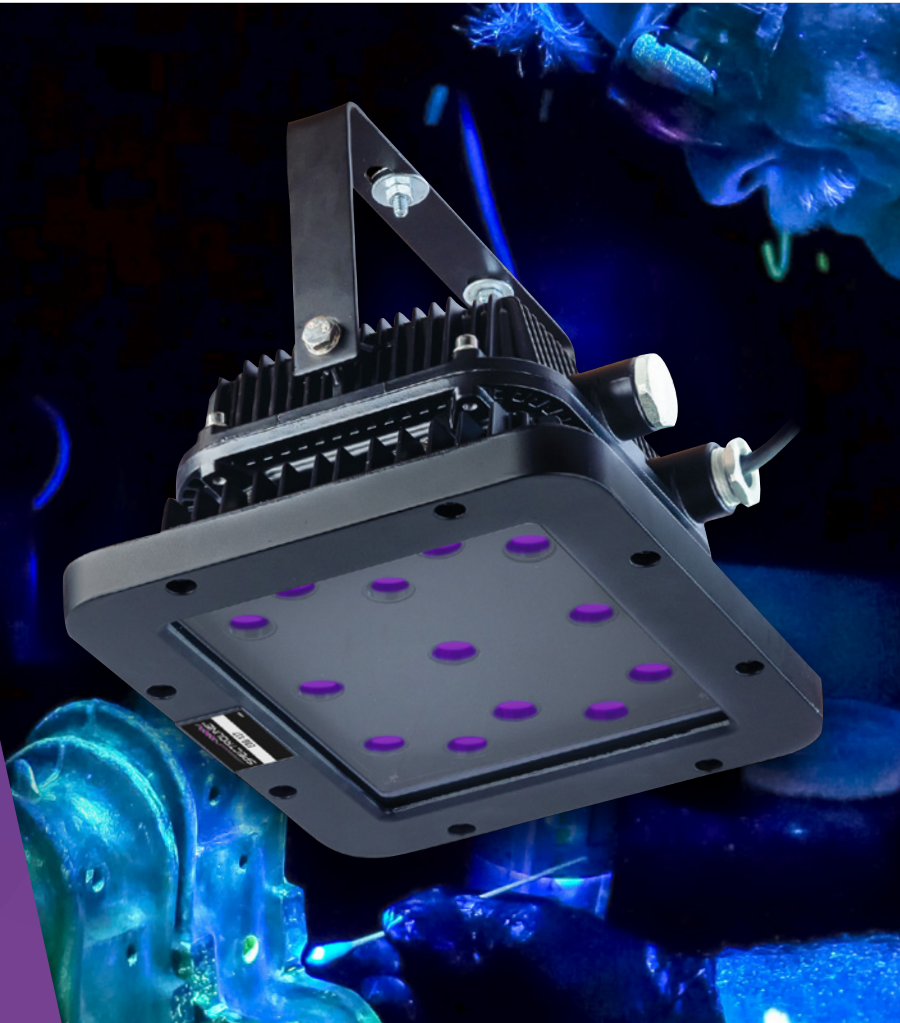


NDT

FLUORESCENT INSPECTION PRODUCTS



- IP RATED LAMPS
- LED UV-A LAMPS
- AEROSPACE COMPLIANT LAMPS
- LED BLUE LIGHT LAMPS
- OVERHEAD FLOOD LAMPS
- DIGITAL LIGHT METERS



RRES
90061

AMS
2647

EN ISO
3059

CEN/TR
16638



ISO 9001:2015 CERTIFIED COMPANY

Spectronics Corporation

**Leading the way since 1955,
setting the new standard in NDT
inspection lamps.**

NDT plays a crucial role in everyday life. We are proud to manufacture the highest quality standard and high-intensity compliant inspection lamps and digital meters for use in liquid penetrant and magnetic particle NDT.

Meeting the New Standard in NDT:

Many of the Spectroline® brand products in this catalog are specifically engineered to meet ASTM E3022-18 and EN ISO:3059 standards. Additionally, we have developed many of our lamps to meet the strict requirements for RRES 90061 (Rolls-Royce), and to meet the regulations for safety in the Aerospace sector. Spectroline® remains at the forefront of developing safe NDT products for MPI and LPI around the world.

Global Leaders:

Our products are utilized for hundreds of markets and applications that demand uncompromising quality and reliability. Spectroline® lamps and radiometers are widely used by technicians in the field around the globe – including the military and aerospace sectors, as well as transportation, oil and gas, mining, fabrication, NDT inspection shops, alternative energy, and more.

NDT INDUSTRIES



AEROSPACE



ALTERNATIVE
ENERGY



AUTOMOTIVE



FABRICATION



MILITARY



MINING



NDT INSPECTION
SHOPS



OIL & GAS



PIPELINE



TRANSPORTATION/
RAILWAY

Our **ASTM** and **Rolls-Royce** compliant inspection lamps are *unmatched* in quality.



E3022-18

RRES
90061

AMS
2647

EN ISO
3059

CEN/TR
16638

SPECTROLINE
NDT

CONTENTS

LED UV-A LAMPS

Series of EN ISO:3059, ASTM E3022-18, and RRES 90061 Lamps for NDT Inspections

HANDHELD LAMPS

uVision™ 365 SERIES	4-7
QUADRAN™ 365 S-SERIES	8-11

OVERHEAD LAMPS

EDGE™ 13 SERIES	12-15
EDGE™ 4 WASH STATION NEW!	16-17

FLASHLIGHT/PORTABLE LAMPS

OPTI-LUX™ 365 SERIES	18-19
OPTIMAX™ 365	22-23

LED BLUE LIGHT LAMPS

450 nm Lamps for Fluorescent Inspections

TRITAN™ 450 SERIES	24-25
OPTIMAX™ 450	26-27
PowerMAX™ 450	28-29

TRADITIONAL BULB UV-A LAMPS

Affordable, Reliable NDT Classics

MAXIMA™ 3500 SERIES	30-31
SUPERFLOOD™ SERIES	32
UV-A LED Replacement Bulb for Traditional Lamps: VIVID™ SERIES	33

DIGITAL RADIOMETERS

ANSI and NIST Traceable

AccuPRO™ SERIES	34-35
AccuMAX™	36-37

Beam Profile Comparison Page	20-21
Sample Certificates of Conformance & Validation Reports	38
Customer Service/Support	39

PROUD MEMBERS OF:



uVision™ 365 SERIES

Compliant, IP Rated, Fanless LED UV-A Lamps

The uVision™ 365 SERIES is Spectroline's innovative line of compact, broad-beam NDT handheld lamps. These lightweight yet rugged lamps boast an IP65 rating – they are dust-tight and water resistant. Using a state-of-the-art heat sink design, the uVision™ is mechanically cooled without the need for a fan. In addition to three powerful UV-A (365 nm) LEDs, it has a convenient white light LED for illuminating work areas. Compliant versions have embedded microprocessors to keep lamps within specifications.

	UV-365SBLC*	UV-365MSBLC*	UV-365SBLCR*	UV-365HC	UV-365MHC	UV-365HCR	UV-365ES	UV-365EH	UV-365MEH
TESTED TO COMPLY WITH Rolls-Royce RRES 90061 REQUIREMENTS	✓	✓	✓	✗	✗	✗	✗	✗	✗
TESTED TO COMPLY WITH ASTM E3022-18 STANDARD	✓	✓	✓	✓	✓	✓	✗	✗	✗
MEETS SPECIFICATIONS EN ISO 3059	✓	✓	✓	✓	✓	✓	✓	✓	✓
Nominal Steady-State UV-A Intensity at 15 in (38 cm) Ø	< 5,000 µW/cm²			6,000 µW/cm²			< 5,000 µW/cm²	7,000 µW/cm²	
UV-A Coverage Area at 15 in (38 cm) at minimum 1,200 µW/cm²	6 in (15 cm) Diameter			6.4 in (16 cm) Diameter			6 in (15 cm) Diameter	7 in (18 cm) Diameter	
Filter/Faceplate	Faceplate with integral UV-A pass filters						Standard faceplate		
Thermal Cut-Off Circuitry	✓			✗					
Battery-Powered, Mobile Model	✗	✓	✗	✗	✓		✗		✓
Reel Kit with 50 ft power cord	✗		✓	✗		✓	✗		
Visible Light Measurement	< 1 foot-candles (11 lux)						< 2 foot-candles (22 lux)		

*These versions are adjusted to ensure that they provide a maximum steady-state UV-A intensity of less than 5,000 µW/cm² at 15 in (38 cm)

Ⓢ UV-A intensity reading taken with the Spectroline® AccuMAX™ Series meter, and is factory set to the value shown.

Each lamp is fitted with an 8-foot cord and the appropriate plug for the country of destination. An optional 20-foot cord is available. The "/20" suffix denotes the 20-foot power cord options.



Technical Features

Light Source:	(3) UV-A LEDs, (1) white light LED	White Light LED Intensity:	400 foot-candles (4,306 lux)
Lamp Style:	Pistol grip	Power Requirements:	100-120VAC / 12VDC*
Lamp Head Diameter:	3.5 in (9 cm)	Battery Pack:	Type: 12V, NiMH (rechargeable) Run time: 3.5 hours continuous Charge time: 2 hours
Height:	7.5 in (19 cm)		
Width:	3.5 in (8.9 cm)		
Weight:	1.9 lb (0.90 kg)		

**(Also available in 230V & 240V versions)*



Compliant Versions*

IP65 RATED



Dust-Tight & Water Resistant



Fanless & Cool Running



Wide, Even Beam Profile



LONG-LASTING UV-A LENSES
Reduce the rate of solarization

3 UV-A LEDS
For wide area of coverage

Faceplate with INTEGRAL UV-A PASS FILTERS
Reduce visible wavelengths

ADJUSTABLE WHITE LIGHT LED
Use to locate surface flaws



BACK VIEW

SEALED CONTROL SWITCH
Grip-mounted, three-way rocker switch (white light/off/UV)

POWER/BATTERY LIFE LIGHT
Indicates power level

PISTOL GRIP
Comfortable, balanced control

uVision™ 365 DELUXE Models*

THERMAL CUT-OFF CIRCUITRY
Prevents lamp from going out of compliance when internal temperature exceeds specifications
**(SBLC models only)*

FANLESS DESIGN
Maintains optimum lamp temperature using state-of-the-art heat sinks



uVision™ 365 ECONOMY Models

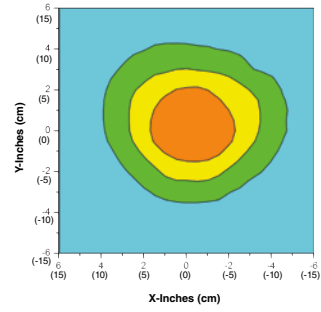
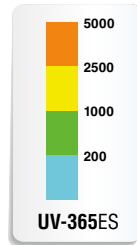
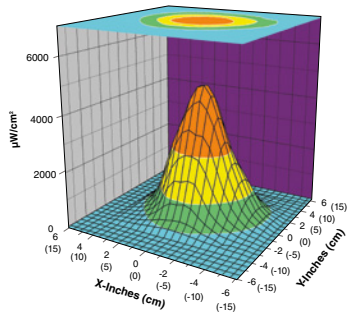
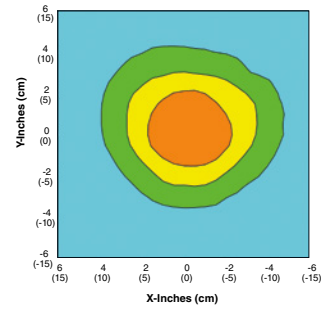
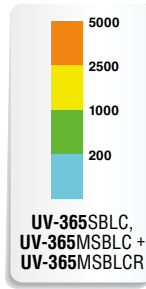
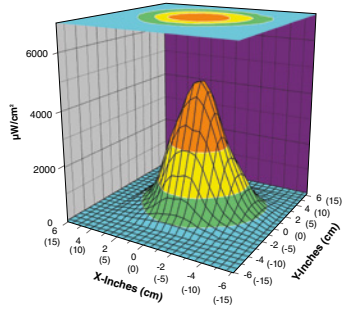
IP65 rated, compact, LED UV-A inspection lamps. Available in two different intensities. These cost-effective inspection lamps can be used in nondestructive evaluation, forensics, and security inspections.

- ▶ **3 UV-A LEDS** for wide area of coverage
- ▶ **WHITE LIGHT LED** allows for scanning surface flaws (not adjustable)
- ▶ **LONG-LASTING UV-A LENSES** reduce the rate of solarization
- ▶ **SEALED CONTROL SWITCH** grip-mounted, three-way rocker switch (white light/off/UV)
- ▶ **PISTOL GRIP** comfortable, balanced control
- ▶ **FANLESS DESIGN** maintains optimum lamp temperature using state-of-the-art heat sinks

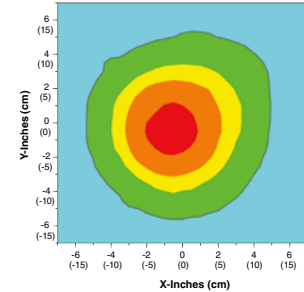
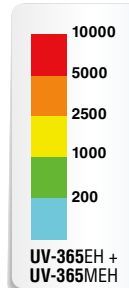
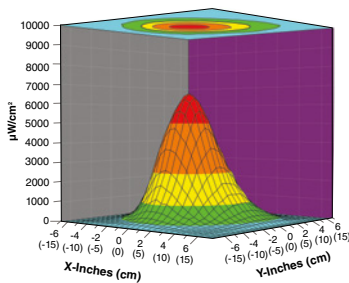
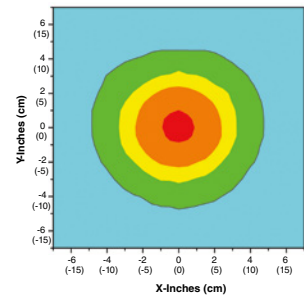
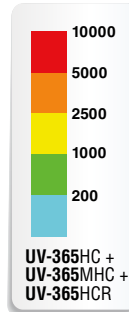
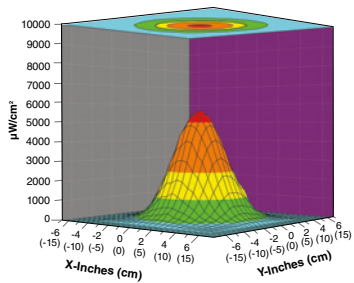
SURFACE CONTOUR PROFILE
at 15 in (38 cm)

TOP INTENSITY PROFILE
at 15 in (38 cm)

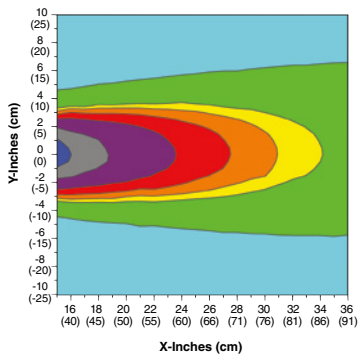
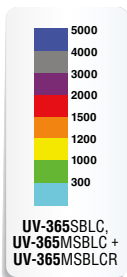
STANDARD-INTENSITY



HIGH-INTENSITY

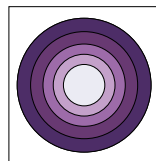


LONGITUDINAL PROFILE Alternative view of beam profile and useful irradiance zone

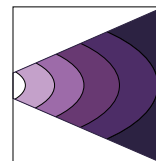


In addition to providing a traditional transverse projected beam showing intensity profile distribution upon a surface, we now measure and provide a longitudinal beam profile for some of our NDT LED UV-A lamps.

The Longitudinal Scan shows irradiance distribution as function of inspection distance.



Transverse Scan:
shows intensity of
beam pattern upon
a surface



Longitudinal Scan:
shows irradiance
distribution as
function of inspection
distance



**uVision™ 365
Deluxe Kit**

Lamp with in-line AC power supply, UV-absorbing spectacles, comes in a protective case.

KIT #
UV-365SBLC or UV-365HC



**uVision™ 365
Reel Deluxe Kit**

Lamp on a reel with 50 ft retracting A/C power cord, hooks to suspend from ceiling, UV-absorbing spectacles.

KIT #
UV-365HCR or UV-365SBLCR



**uVision™ 365
Mobile Deluxe Kit**

Lamp with in-line AC power supply, UV-absorbing spectacles, battery pack with 12V rechargeable NiMH battery, comes in a protective case.

KIT #
UV-365MSBLC or UV-365MHC



**uVision™ 365
Mobile Standard Kit**

Lamp with AC power supply, UV-absorbing spectacles, battery pack with 12V rechargeable NiMH battery, comes in a padded case.

KIT #
UV-365MEH or UV-365MES

Replacement Parts and Accessories



IMAGE	PART #	DESCRIPTION	IMAGE	PART #	DESCRIPTION
	127955	Standard faceplate		BP-30	Battery pack with 12V rechargeable NiMH battery
	128196	Faceplate with integral UV-A pass filters		BR-150A	Smart AC charger for battery pack
	130206	8 foot (2.4 m) AC power cord (100-120V/50-60Hz)		CC-370A	Padded carrying case
	130210	20 foot (6.1 m) AC power cord (100-120V/50-60Hz)		FA-100	Flexible arm
	130260	8 foot (2.4 m) AC power cord for DELUXE SERIES* (100-120V/50-60Hz)		FP-600	Borofloat® filter protector
	130264	20 foot (6.1 m) AC power cord for DELUXE SERIES* (100-120V/50-60 Hz)		UL-110	Long lasting UV-A lens
	130290	8 foot (2.4 m) AC power cord for MOBILE DELUXE SERIES* (100-120V/50-60Hz)		UVS-30	UV-absorbing spectacles
	130294	20 foot (6.1 m) AC power cord for MOBILE DELUXE SERIES* (100-120V/50-60Hz)		W-6	Wall mount with pin
	140005	Protective carrying case for DELUXE SERIES		WM-100	Wall mounting bracket
	B-6	Bench mount			

* Available in 100-120V, 230V and 240V versions

QUADRAN™ 365 S-SERIES

Powerful NDT LED UV-A Inspection Lamps

QUADRAN™ 365 S-SERIES lamps are versatile, broad-beam NDT inspection lamps that are handheld, or can be easily mounted in place for stationary in-line inspections. These lamps feature four powerful UV-A (365 nm) LEDs plus a convenient white light LED to quickly switch between fluorescent inspection and flaw location. For increased flexibility, a unique dual, high/low white light output control.

		QDR-365SC	QDR-365SA
TESTED TO COMPLY WITH	 ASTM E3022-18 STANDARD	✓	✗
	 EN ISO 3059	✓	✓
Nominal Steady-State UV-A Intensity at 15 in (38 cm) Ø		3,700 µW/cm ²	4,500 µW/cm ²
UV-A Coverage Area at 15 in (38 cm) at minimum 1,200 µW/cm ²		6 in (15 cm) Diameter	6.5 in (16.5 cm) Diameter
Filter/Faceplate		Faceplate with integral UV-A pass filters	Standard faceplate
Visible Light Measurement		< 0.5 foot-candles (5 lux)	< 2 foot-candles (22 lux)

Ø UV-A intensity reading taken with the Spectroline® AccuMAX™ Series meter, and is factory set to the value shown. Each lamp is fitted with an 8-foot cord and the appropriate plug for the country of destination. An optional 20-foot cord is available. The "/20" suffix denotes the 20-foot power cord options.



Technical Features

Light Source:	(4) UV-A LEDs, (1) white light LED	White Light LED Intensity:	High setting: 300 foot-candles (3,229 lux) Low setting: 10 foot-candles (108 lux)
Lamp Style:	Pistol grip	Power Requirements:	100-120VAC / 12VDC*
Lamp Head Size:	6 x 5.5 in (15 x 14 cm)	Cooling System:	Built-in fan
Height:	10 in (25 cm)		
Weight:	3 lb (1.36 kg)		

**(Also available in 230V & 240V versions)*

Compliant Versions*

**4 UV-A LEDs
1 White Light LED**

Very Broad Coverage Area

Cool Running



LONG-LASTING UV-A LENSES
Reduce the rate of solarization

WHITE LIGHT LED
Use to locate surface flaws

Faceplate with INTEGRAL UV-A PASS FILTERS
Reduce visible wavelengths
**(SC model only)*

RUBBER BUMPER
With Borofloat® glass lens protects LEDs from damage

BUILT-IN FANS
Maintains optimum light output



EASY CONTROL
Rear-mounted, three-way rocker switch (white light/off/UV)

IN-LINE INSPECTION
Lamp handle pin receptacle allows for easy mounting attachments.

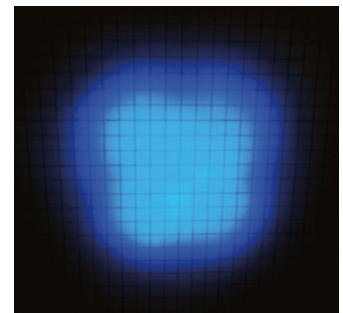


**127944
STANDARD FACEPLATE**



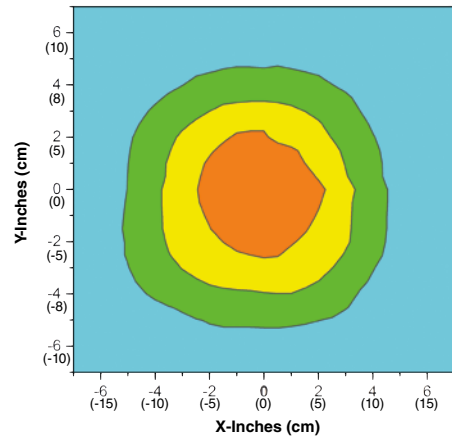
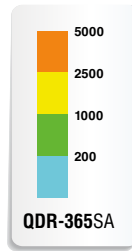
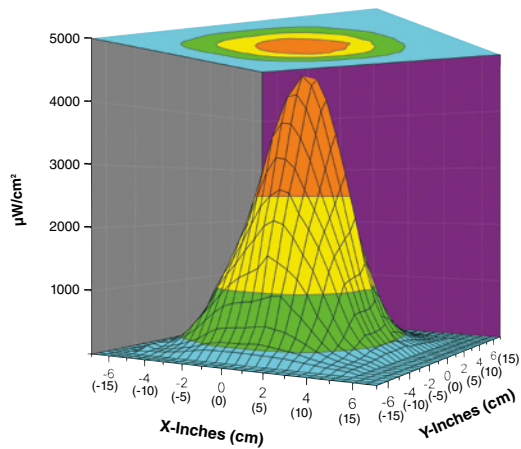
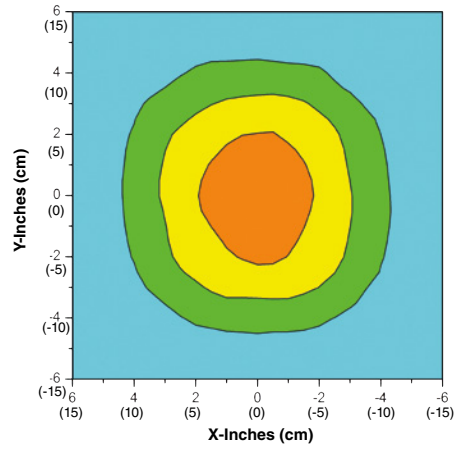
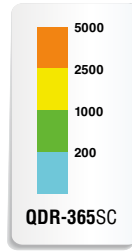
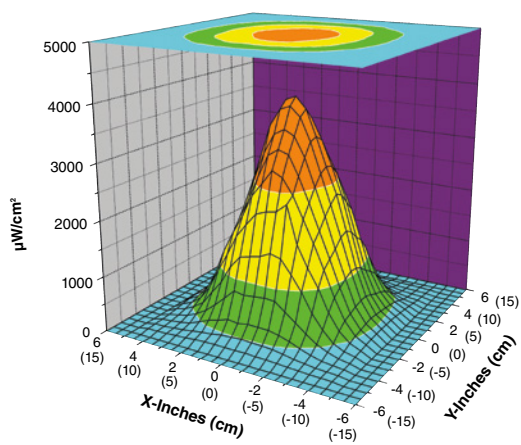
**128094
FACEPLATE WITH INTEGRAL UV-A PASS FILTERS**
**(SC model only)*

Uniform Beam Pattern
QDR-365SC at 10 in (25 cm)

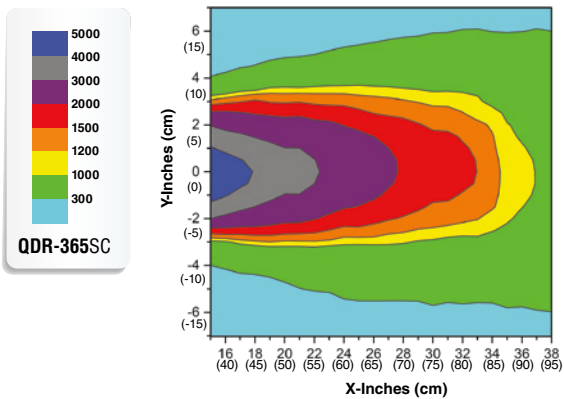


SURFACE CONTOUR PROFILE
at 15 in (38 cm)

TOP INTENSITY PROFILE
at 15 in (38 cm)

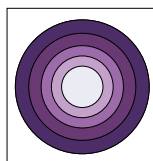


LONGITUDINAL PROFILE Alternative view of beam profile and useful irradiance zone

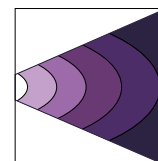


In addition to providing a traditional transverse projected beam showing intensity profile distribution upon a surface, we now measure and provide a longitudinal beam profile for some of our NDT LED UV-A lamps.

The Longitudinal Scan shows irradiance distribution as function of inspection distance.


















Transverse Scan:
shows intensity of beam pattern upon a surface



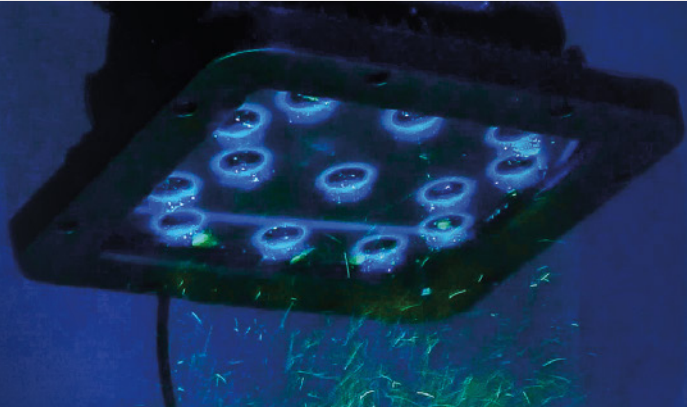
Longitudinal Scan:
shows irradiance distribution as function of inspection distance



Replacement Parts and Accessories

IMAGE	PART #	DESCRIPTION	IMAGE	PART #	DESCRIPTION
	127922	Particulate filter assembly		FP-550	Rubber bumper with Borofloat® glass
	127944	Standard faceplate		PS-200A	Industrial power supply. primary cord: 8 feet (2.4 m); secondary cord: 20 feet (6.1 m).*
	128094	Faceplate with integral UV-A pass filters		PS-300A	In-line power supply. primary cord: 8 feet (2.4 m); secondary cord: 8 feet (2.4 m).*
	129141	Standard, 8-foot (2.4 m) AC power cord		UL-110	Long lasting UV-A lens
	129145	Extra-long 20 foot (6.1 m) AC power cord		UVS-30	UV-absorbing spectacles
	B-6	Bench mount		W-6	Wall mount with pin
	CC-400	Padded carrying case		WM-100	Wall mounting bracket
	FA-100	Flexible arm			

* Available in 100-120V, 230V and 240V versions



EDGE™ 13 SERIES

LED UV-A Panel Flood Lamps

Get an **EDGE** on your overhead inspections with our flood lamp series from Spectroline®, the **EDGE™ 13 SERIES**. Designed specifically for NDT professionals who require a reliable and rugged overhead UV-A LED lamp for large parts inspection, these **IP65** rated panel lamps are dust-tight and protected against jets of water from all angles. Expand coverage by connecting lamps together via gang ports. Fanless cooling means fewer headaches. The only overhead NDT lamp series that has all of these features and comes in a RRES-90061 model.

		EDG-13SBLC	EDG-13HC	EDG-13H	EDG-13T
TESTED TO COMPLY WITH	Rolls-Royce RRES 90061 REQUIREMENTS	✓	✗	✗	✗
TESTED TO COMPLY WITH	ASTM E3022-18 STANDARD	✓	✓	✗	✗
MEETS SPECIFICATIONS	EN ISO 3059	✓	✓	✓	✓
Nominal Steady-State UV-A Intensity at 15 in (38 cm) Ⓞ		4,700 $\mu\text{W}/\text{cm}^2$	8,500 $\mu\text{W}/\text{cm}^2$	15,000 $\mu\text{W}/\text{cm}^2$	6,500 $\mu\text{W}/\text{cm}^2$
UV-A Coverage Area at 15 in (38 cm) at minimum 1,000 $\mu\text{W}/\text{cm}^2$		14.5 x 13 in (37 x 33 cm)	24 x 22 in (60 x 56 cm)	18 x 16 in (45.7 x 40.6 cm)	17 x 15 in (43 x 38 cm)
Filter		Integral UV-A pass filters		Clear filter	
Thermal Cut-Off Circuitry		✓	✗		
Visible Light Measurement		< 1 foot-candles (11 lux)		< 2 foot-candles (22 lux)	< 1 foot-candles (11 lux)

Ⓞ UV-A intensity reading taken with the Spectroline® AccuMAX™ Series meter, and is factory set to the value shown.



Technical Features

Light Source:	(13) UV-A LEDs	Weight:	14 lb (6.4 kg)
Lamp Style:	Panel flood lamp	Power Requirements:	AC power (main AC power cord supplied with the unit)*
Dimensions (L x W x H):	11 x 14 x 9 in (28 x 36 x 23 cm)	Cooling System:	Fanless

*(Also available in 100-120V, 230V and 240V versions)



Compliant Versions*

IP65 RATED



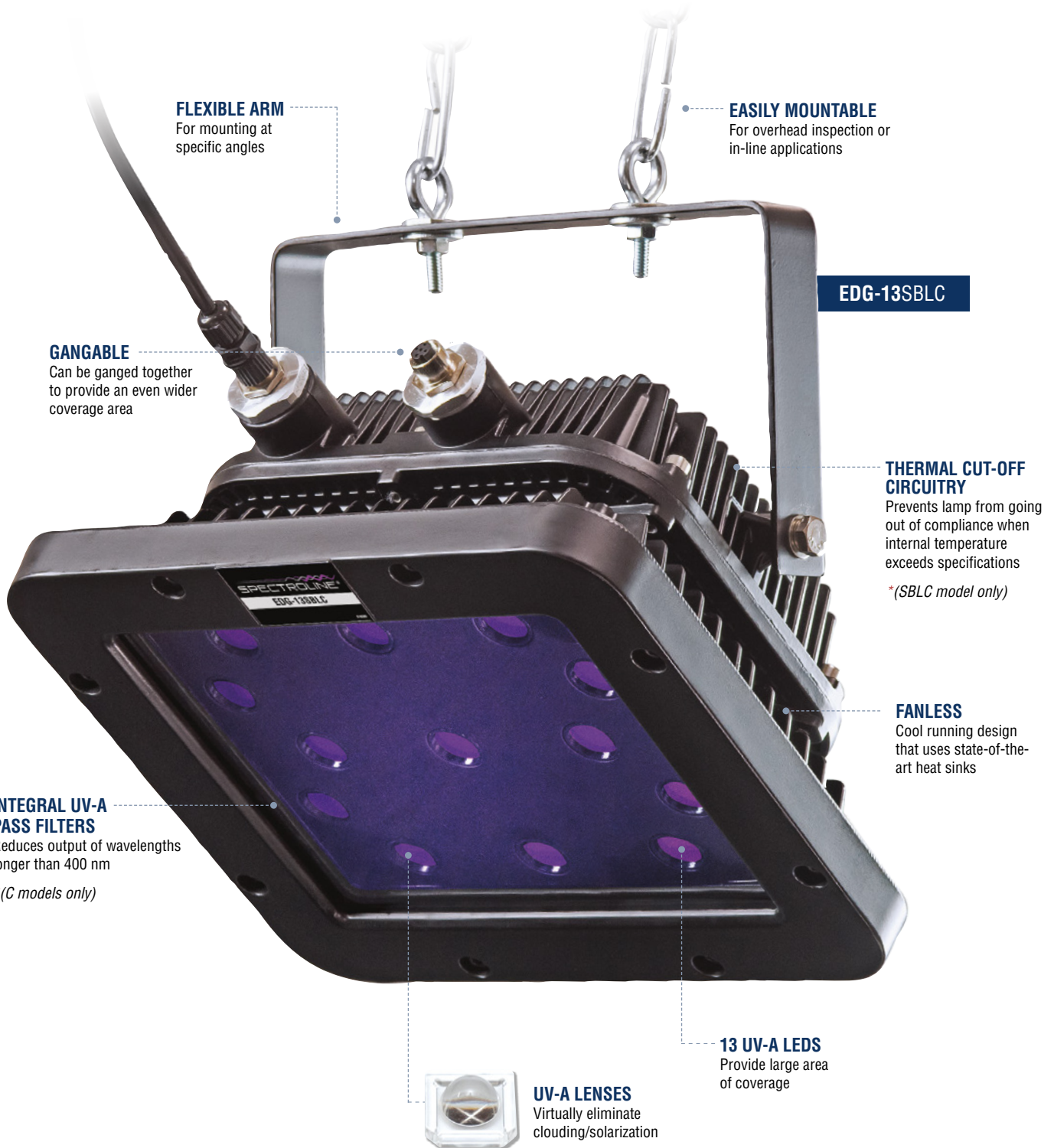
Dust-Tight & Water Resistant



NDT Inspection Booths



Large Parts Inspection



FLEXIBLE ARM
For mounting at specific angles

EASILY MOUNTABLE
For overhead inspection or in-line applications

EDG-13SBLC

GANGABLE
Can be ganged together to provide an even wider coverage area

THERMAL CUT-OFF CIRCUITRY
Prevents lamp from going out of compliance when internal temperature exceeds specifications
**(SBLC model only)*

FANLESS
Cool running design that uses state-of-the-art heat sinks

INTEGRAL UV-A PASS FILTERS
Reduces output of wavelengths longer than 400 nm
**(C models only)*

13 UV-A LEDs
Provide large area of coverage

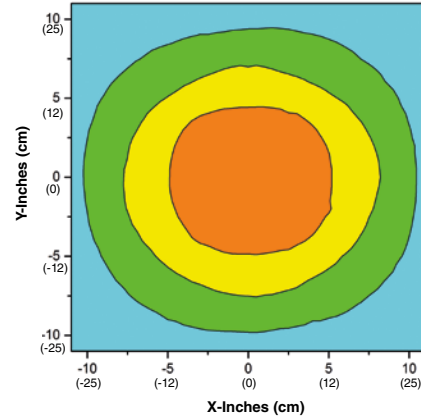
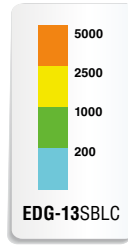
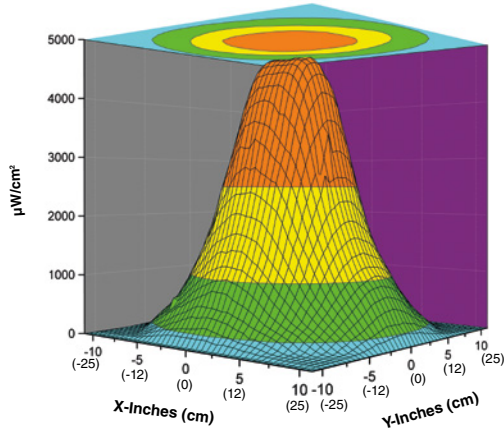


UV-A LENSES
Virtually eliminate clouding/solarization

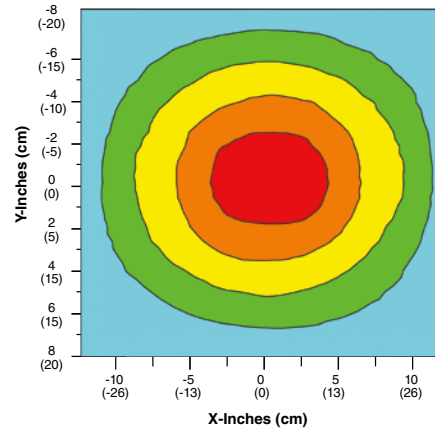
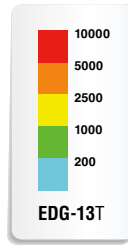
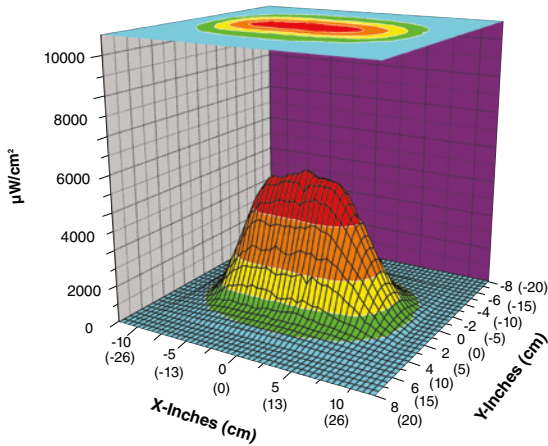
SURFACE CONTOUR PROFILE
at 15 in (38 cm)

TOP INTENSITY PROFILE
at 15 in (38 cm)

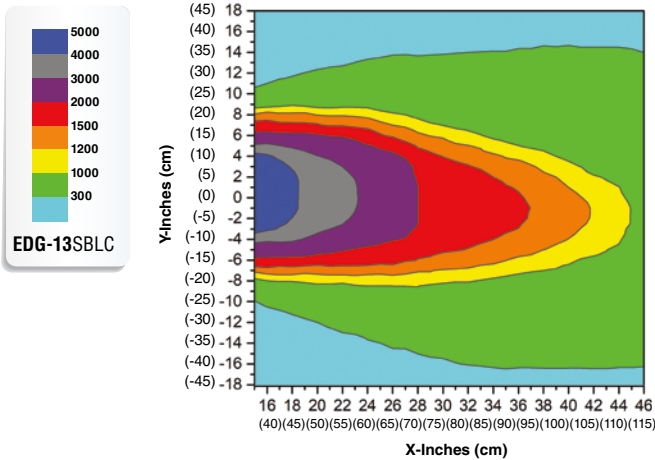
STANDARD-INTENSITY



HIGH-INTENSITY

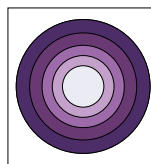


LONGITUDINAL PROFILE Alternative view of beam profile and useful irradiance zone

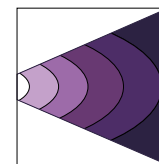


In addition to providing a traditional transverse projected beam showing intensity profile distribution upon a surface, we now measure and provide a longitudinal beam profile for some of our NDT LED UV-A lamps.

The Longitudinal Scan shows irradiance distribution as function of inspection distance.



Transverse Scan:
shows intensity of beam pattern upon a surface



Longitudinal Scan:
shows irradiance distribution as function of inspection distance

MEET YOUR EXACT SPECIFICATIONS, NO MATTER THE JOB LEVEL.



EDG-13H
HIGH-INTENSITY: 15,000 $\mu\text{W}/\text{cm}^2$



EDG-13SBLC
STANDARD-INTENSITY: < 5,000 $\mu\text{W}/\text{cm}^2$

For applications requiring extremely large coverage area, the EDGE™ 13 can be quickly ganged together.



*Optional accessory:
Gangable cables with connectors (130156)

Replacement Parts and Accessories

IMAGE	PART #	DESCRIPTION	IMAGE	PART #	DESCRIPTION
	130155	AC control box with connector (120V/50-60Hz)		131163	AC control box with connector (220-240V/50Hz with CCC Config.)
	130156	Gangable cables with connectors		131164	AC control box with connector (220-240V/50Hz with Australia plug)
	131160	UV-A pass filter assembly (Pack of 13)		131165	AC control box with connector (230V/50Hz with UK plug)
	131161	UV-A lens (Pack of 13)		131166	AC control box with connector (230V/50Hz with Euro plug)
	131162	Clear glass assembly with gaskets		UVS-30	UV-absorbing spectacles

NEW!

EDGE™ 4

LED UV-A Overhead Wash Station Lamp



The **EDGE™ 4** is a flood lamp engineered specifically for wash stations. It provides a very wide area of coverage without a high intensity. The IP65-rated housing allows the lamp to work in wet and dirty environments. Heat sinks keep the lamp cool without the need for a fan, so no dust or water can enter. Four UV-A LEDs provide a wide, uniform beam that is highly consistent and reliable.

	EDG-4W
Nominal Steady-State Intensity [⊕] at 48 in (122 cm)	1,400 $\mu\text{W}/\text{cm}^2$
UV-A Coverage Area at 48 in (122 cm) at minimum 200 $\mu\text{W}/\text{cm}^2$	22 x 22 in (56 x 56 cm)
Nominal Steady-State Intensity [⊕] at 72 in (183 cm)	670 $\mu\text{W}/\text{cm}^2$
UV-A Coverage Area at 72 in (183 cm) at minimum 200 $\mu\text{W}/\text{cm}^2$	24 x 24 in (61 x 61 cm)
Nominal Steady-State Intensity [⊕] at 96 in (244 cm)	380 $\mu\text{W}/\text{cm}^2$
UV-A Coverage Area at 96 in (244 cm) at minimum 200 $\mu\text{W}/\text{cm}^2$	25 x 25 in (63.5 x 63.5 cm)
LED Filter	Protective clear filter

Technical Features

Light Source:	(4) UV-A LEDs
Lamp Style:	Panel flood lamp
Dimensions (L x W x H):	11 x 14 x 9 in (28 x 36 x 23 cm)
Weight:	14 lb (6.4 kg)
Power Requirements:	AC power (main AC power cord supplied with the unit)*
Cooling System:	Fanless

**(Also available in 100-120V, 230V and 240V versions)*



[⊕] UV-A intensity reading taken with the Spectroline® AccuMAX™ Series meter, and is factory set to the value shown.

Replacement Parts and Accessories





IMAGE	PART #	DESCRIPTION
	131429	UV-A lens (Pack of 4)
	131162	Clear glass assembly with gaskets

IMAGE	PART #	DESCRIPTION
	UVS-30	UV-absorbing spectacles
	UVG-50	UV-absorbing goggles

**IP65
RATED**



**Dust-Tight &
Water Resistant**



**NDT Wash
Stations**



**Wide
Coverage Area**



EASILY MOUNTABLE
For overhead inspection or
in-line applications

FLEXIBLE ARM
For mounting at
specific angles

EDG-4W

4 UV-A LEDs
Provide large area
of coverage

FANLESS
Cool running design
that uses state-of-the-
art heat sinks






UV-A LENSES
Virtually eliminate
clouding/solarization

**IP65
RATED**

OPTI-LUX™ 365 SERIES

LED UV-A Inspection Flashlights

The **OPTI-LUX™ 365 SERIES** inspection flashlights feature a powerful UV-A (365 nm) LED light source coupled with a rugged anodized lamp body. They reduce user fatigue while providing an extremely uniform beam profile that surpasses those of more expensive lamps. Available in four models to suit your specific NDT needs: high-intensity or standard-intensity versions, each with or without an internal UV-A pass filter. Each lamp comes with a Certificate of Light Output for both wavelength and output measurements.

		OLX-365	OLX-365B	OLX-365FL	OLX-365BFL
MEETS SPECIFICATIONS					
	EN ISO 3059				
Nominal Steady-State UV-A Intensity at 15 in (38 cm) Ⓞ		10,000 $\mu\text{W}/\text{cm}^2$		4,500 $\mu\text{W}/\text{cm}^2$	
UV-A Coverage Area at 15 in (38 cm) at minimum 1,200 $\mu\text{W}/\text{cm}^2$		2 in (5 cm) Diameter		2.5 in (6.3 cm) Diameter	
Filter/Faceplate		Clear filter	UV-A pass filter	Clear filter	UV-A pass filter
Visible Light Measurement		0.8 foot-candles (8.6 lux)	0.4 foot-candles (4.3 lux)	0.3 foot-candles (3.2 lux)	0.2 foot-candles (2.1 lux)

Ⓞ UV-A intensity reading taken with the Spectroline® AccuMAX™ Series meter, and is factory set to the value shown.



Technical Features

Light Source:	(1) UV-A LED
Lamp Style:	Cordless flashlight
Lamp Head Diameter:	1.25 in (3.2 cm)
Length:	5.9 in (15 cm)
Weight:	4.6 oz (130 g) with battery

Power Requirements:	(1) 3.7V 2600mA/Hr lithium-ion battery (rechargeable)
Run Time:	4 hours (continuous)
Charge Time:	4 hours (one or two batteries)
Charging Cradle:	Two-battery capability with AC and DC cord sets*

**(Also available in 100-120V, 230V & 240V versions)*

Replacement Parts and Accessories










IMAGE	PART #	DESCRIPTION
	127423	Dome lens
	127568	Lithium-ion battery (rechargeable)
	127574	Belt holder
	127607	Internal UV-A pass filter
	127785	Internal clear filter

IMAGE	PART #	DESCRIPTION
	128217	Smart charging cradle with AC and DC cord sets
	BF-365LX	External UV-A pass filter with rubber bumper
	CC-365	Hard carrying case
	UVS-30	UV-absorbing spectacles

Li-ION Rechargeable Li-ION Battery

Bright & Uniform Beam

Instant-on Operation

Small Space Inspection

CONVENIENT ON/OFF SWITCH
For easy one-handed operation



ANODIZED ALUMINUM LAMP BODY
Minimizes corrosion and stands up to years of heavy use

BF-365LX
External UV-A pass filter accessory



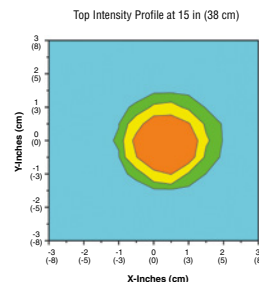
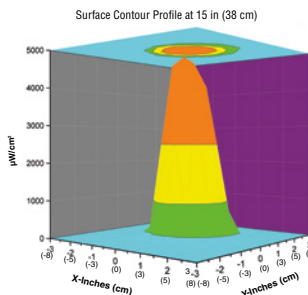
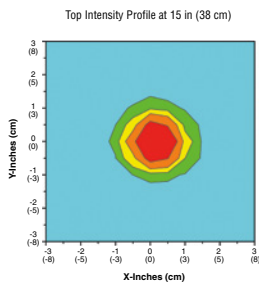
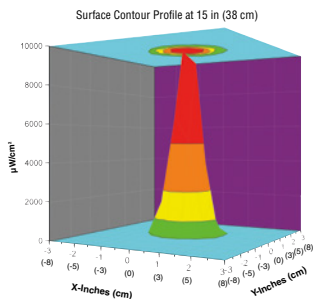
OPTI-LUX™ 365 SERIES Flashlight Kit

Come complete with OPX-365 LED UV-A (365 nm) lamp with lanyard, two rechargeable batteries, smart charging cradle with AC and DC cord sets, UV-absorbing spectacles, belt holder and a hard carrying case.

UV-A Beam Profiles

HIGH-INTENSITY

STANDARD-INTENSITY



INCHES

-7

-6

-5

-4

-3

-2

-1

CENTIMETERS

-170

-160

-150

-140

-130

-120

-110

-100

-90

-80

-70

-60

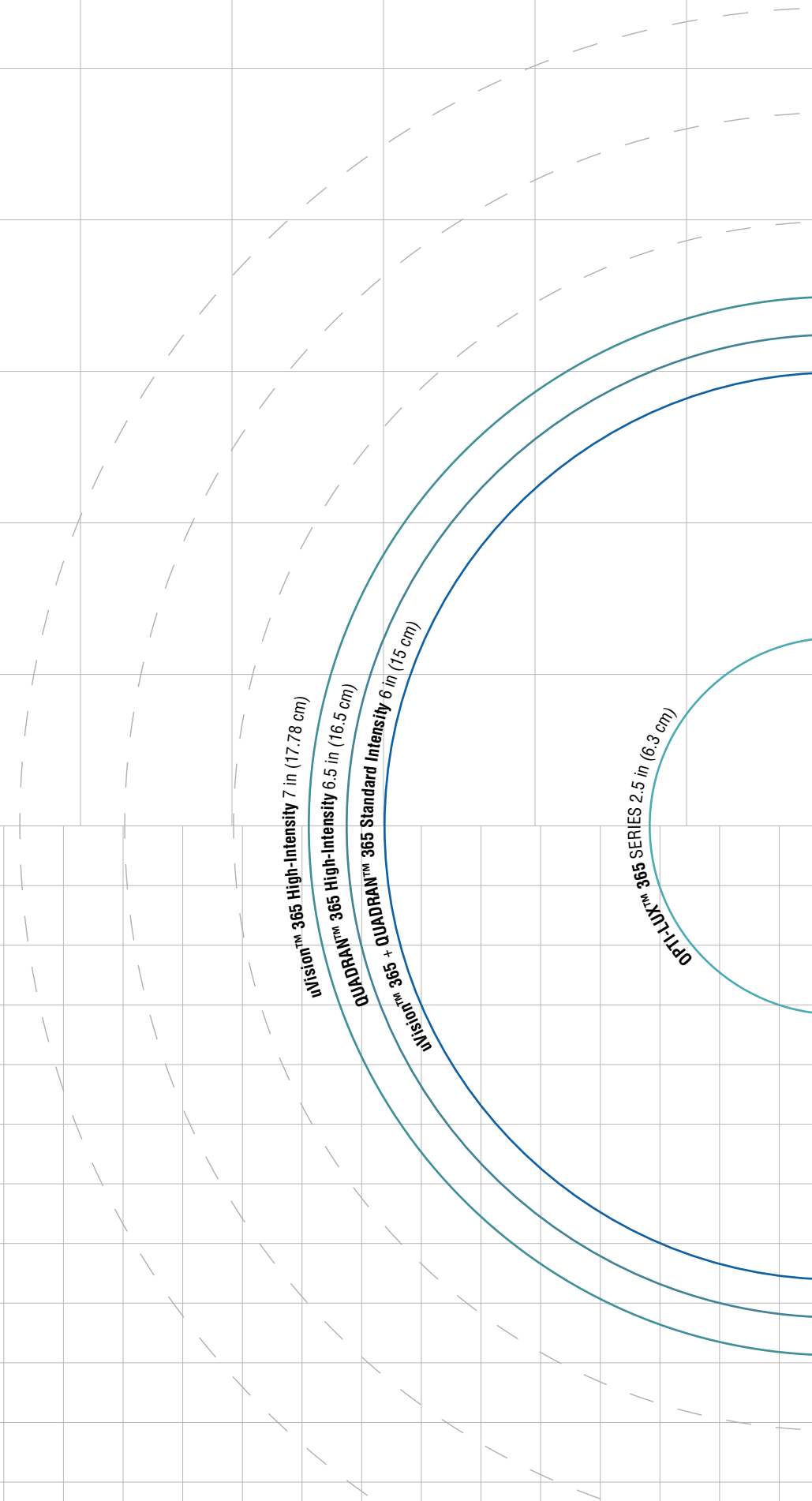
-50

-40

-30

-20

-10



uVision™ 365 High-Intensity 7 in (17.78 cm)

QUADRAN™ 365 High-Intensity 6.5 in (16.5 cm)

QUADRAN™ 365 Standard Intensity 6 in (15 cm)

OPT-LUX™ 365 SERIES 2.5 in (6.3 cm)

0

1

2

3

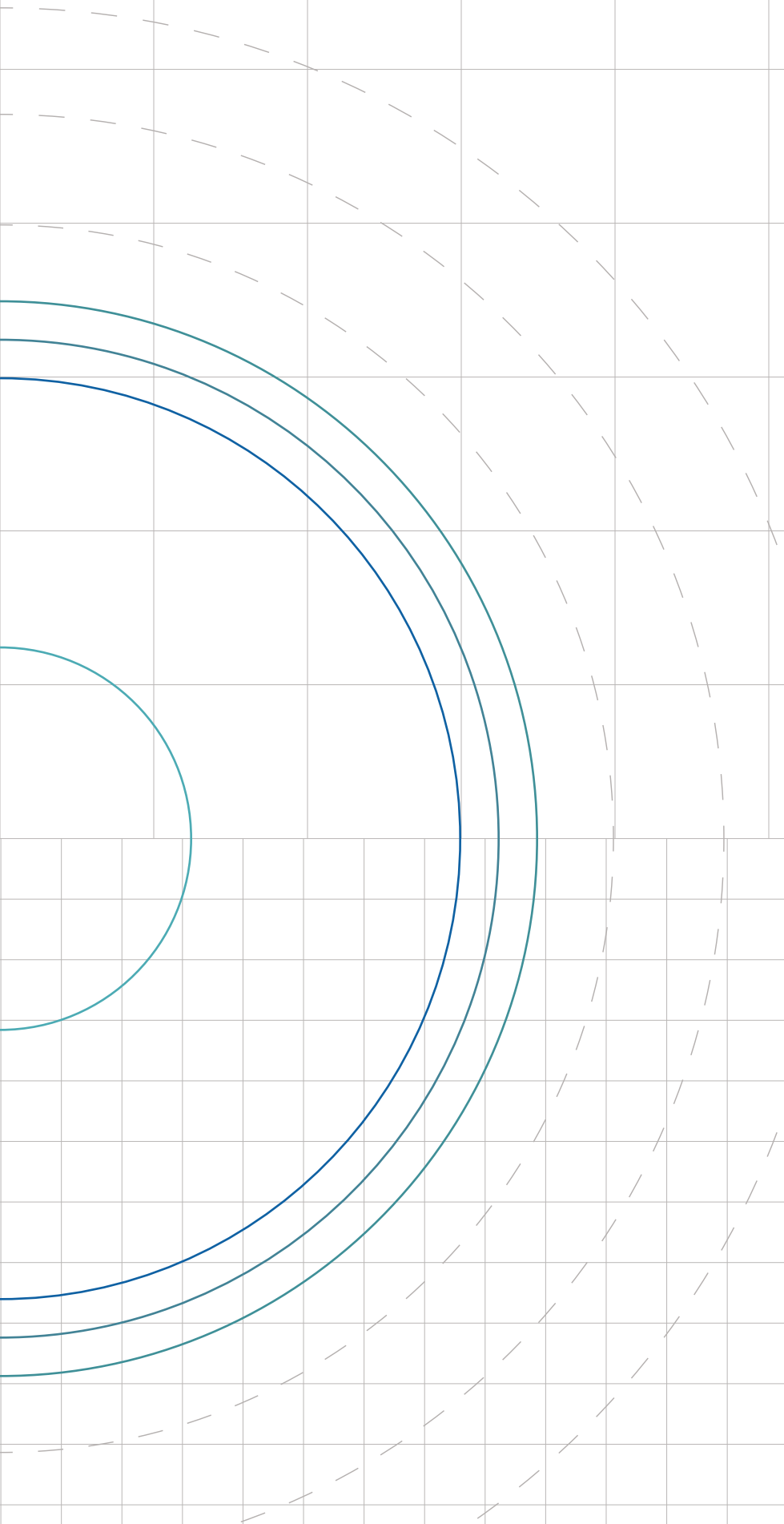
4

5

6

7

INCHES



NOTE: These areas represent beam profiles as measured at a 15 in (38 cm) distance, with an intensity of 1200 $\mu\text{W}/\text{cm}^2$

0 10 20 30 40 50 60 70 80 90 100 110 120 130 140 150 160 170

CENTIMETERS

OPTIMAX™ 365

LED UV-A Inspection Flashlight

The cordless **OPTIMAX™ 365** is ergonomic, compact and lightweight. It's designed to provide ultimate freedom of movement during inspections. With an ultra-high-intensity output, it's our most powerful UV-A (365 nm) LED flashlight.

	OPX-365
Nominal Steady-State UV-A Intensity at 15 in (38 cm) Ⓞ	18,000 $\mu\text{W}/\text{cm}^2$
UV-A Coverage Area at 15 in (38 cm) at minimum 1,200 $\mu\text{W}/\text{cm}^2$	2.5 in (6.3 cm) Diameter
Visible Light Measurement	< 2 foot-candles (22 lux)

Technical Features

Light Source:	(1) UV-A LED
Lamp Style:	Cordless flashlight
Lamp Head Diameter:	2 in (5.1 cm)
Length:	8 in (20.3 cm)
Weight:	11.8 oz (335 g) with battery
Power Requirements:	3.6V, 2.0Ah NiMH internal battery stick (rechargeable)
Run Time:	90 minutes (continuous)
Charge Time:	4 hours

Ⓞ UV-A intensity reading taken with the Spectroline® AccuMAX™ Series meter, and is factory set to the value shown.



Replacement Parts and Accessories

IMAGE	PART #	DESCRIPTION
	125608	Battery stick with tail-cap
	127243	Belt holder
	CC-365	Hard carrying case

IMAGE	PART #	DESCRIPTION
	RB-300	Smart AC charger (120V/60Hz)*
	RB-300DC	12V DC charger
	UVS-30	UV-absorbing spectacles

*Also available in 230V, 240V, and 100V versions



Rechargeable NiMH Battery



Bright & Uniform Beam



Instant-on Operation



90 Minutes Run Time



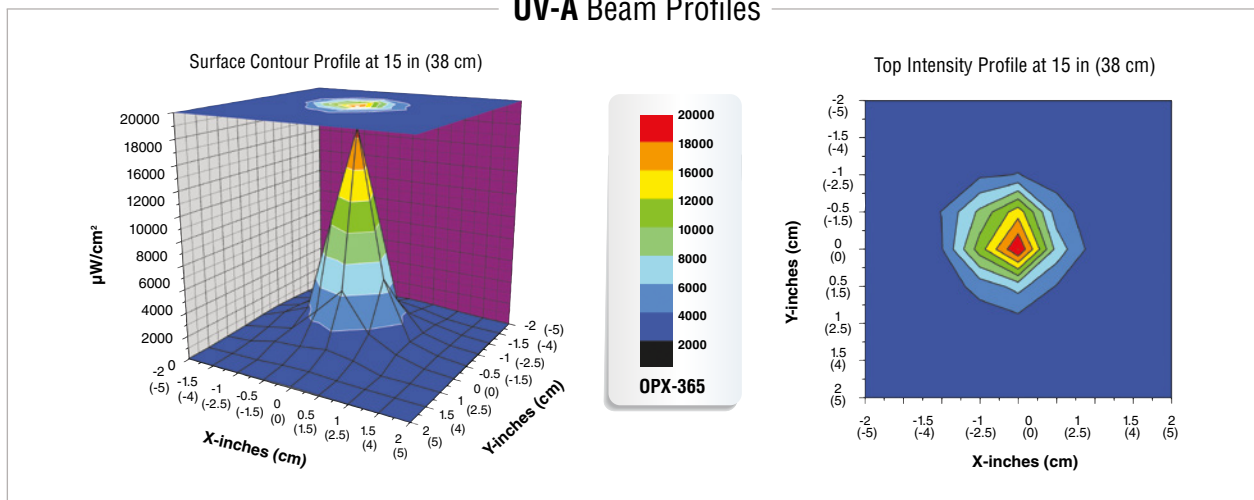
OPTIMAX™ 365 Flashlight Kit

Comes complete with OPTIMAX™ 365 (365 nm) lamp, smart AC and DC chargers, UV-absorbing spectacles, belt holder and hard carrying case. AC charger available in 120V, 230V, 240V or 100V versions.

KIT #
OPX-365

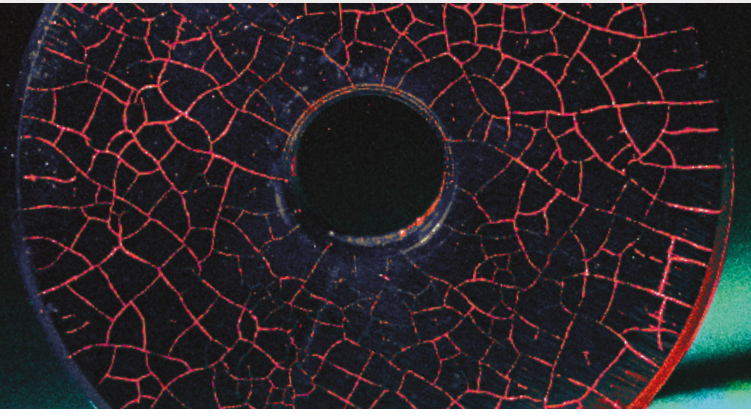


UV-A Beam Profiles



TRITAN™ 450 SERIES

LED Blue Light Handheld Inspection Lamps



The **TRITAN™ 450 SERIES** features three cool-running, ultra-high flux blue light (450 nm) LEDs with a broad-beam configuration. This powerful lamp provides a wider coverage area than conventional inspection lamps, while its compact head design allows access to areas inaccessible to larger inspection lamps. Ideal for most nondestructive testing applications, including use in some ambient light conditions.

		TRI-450B	TRI-450MB
MEETS SPECIFICATIONS	CEN/TR 16638	✓	
	Nominal Steady-State Blue Light Intensity at 15 in (38 cm) Ø	9,500 µW/cm ²	
	Blue Light Coverage Area at 15 in (38 cm) at minimum 2,000 µW/cm²	5 in (13 cm) Diameter	
	Battery-Powered, Mobile Model	✗	✓

Technical Features

Light Source:	(3) Blue light LEDs
Lamp Style:	Pistol grip
Lamp Head Diameter:	3.25 in (8.25 cm)
Length:	8 in (20.3 cm)
Weight:	1 lb (454 g) with battery
Power Requirements:	TRI-450B: 100-120VAC TRI-450MB: 100-120VAC/12VDC (Also available in 230V & 240V versions)
Battery Pack:	Type: 12V, NiMH (rechargeable) Run time: 3.5 hours continuous Charge time: 2 hours

⊕ Blue Light intensity reading taken with the Spectroline® AccuMAX™ Series meter, and is factory set to the value shown.

Each lamp is fitted with an 8-foot cord and the appropriate plug for the country of destination. An optional 20-foot cord is available. The "/20" suffix denotes the 20-foot power cord options.



Replacement Parts and Accessories

IMAGE	PART #	DESCRIPTION
	127933	Particulate filter assembly
	129141	Standard 8 foot (2.4 m) AC power cord
	129145	Extra-long 20 foot (6.1 m) AC power cord
	129162	3.5 foot (1.1 m) DC power cord for "M" SERIES lamps
	BP-30	Battery pack with 12V rechargeable NiMH battery
	BR-150A	Smart AC charger for battery pack

IMAGE	PART #	DESCRIPTION
	CC-370A	Padded carrying case
	FP-450	Rubber bumper with dichroic lens
	PS-200A	Industrial power supply / primary cord: 8 feet (2.4 m); secondary cord: 20 feet (6.1 m).*
	PS-300A	In-line power supply / primary cord: 8 feet (2.4 m); secondary cord: 8 feet (2.4 m).*
	PSA-250A	AC/DC power supply adapter for "M" SERIES lamps
	UVS-40	Fluorescence-enhancing spectacles, yellow

* Available in 230V and 240V versions



Broad-Beam Configuration



Cool Running



Instant-on Operation



Works In Daylight!



3 BLUE LIGHT LEDS

For wide area of coverage

PATENTED, THIN-FILM DICHOIC LENS

With rubber bumper protects LEDs from damage, improve contrast and fluorescent response

BUILT-IN FANS
Maintains optimum light output



TWO REPLACEABLE CORD CHOICES

Standard or extra-long with AC plug and rubber boot



TRITAN™ 450 Mobile Kit

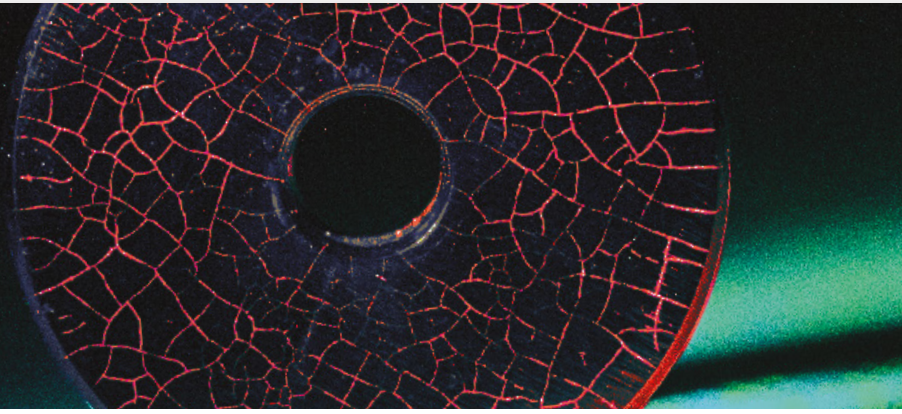
Portable, battery-operated AC/DC lamp kit. Includes TRITAN™ 450 LED blue light lamp, rechargeable NiMH battery pack, power supply adapter with AC/DC cord sets, smart AC charger, fluorescence-enhancing yellow spectacles and padded carrying case.

KIT #
TRI-450MB



OPTIMAX™ 450

Rechargeable LED Blue Light Flashlight



The **OPTIMAX™ 450** is a versatile, cordless inspection lamp, featuring a high-intensity blue light (450 nm) LED. The anodized aluminum lamp body minimizes corrosion and stands up to years of heavy use, and our patented, thin-film dichroic lens filters out long-wave visible light. Electronic Intensity Stabilizer assures consistent performance. Beam strength will not weaken between charges. Powered by a rechargeable NiMH battery. Provides 90 minutes of continuous inspection between charges.

		OPX-450
MEETS SPECIFICATIONS	CEN/TR 16638	✓
	Nominal Steady-State Blue Light Intensity at 15 in (38 cm) Φ	7,000 $\mu\text{W}/\text{cm}^2$
	Blue Light Coverage Area at 15 in (38 cm) at minimum 2,000 $\mu\text{W}/\text{cm}^2$	3 in (7.6 cm) Diameter

Technical Features

Light Source:	(1) Blue light LED
Lamp Style:	Cordless flashlight
Lamp Head Diameter:	2 in (5.1 cm)
Length:	8 in (20.3 cm)
Weight:	11.8 oz (335 g) with battery
Power Requirements:	3.6V, 2.0Ah NiMH internal battery stick (rechargeable)
Run Time:	90 minutes (continuous)
Charge Time:	4 hours

Φ Blue Light intensity reading taken with the Spectroline® AccuMAX™ Series meter, and is factory set to the value shown.



Replacement Parts and Accessories

IMAGE	PART #	DESCRIPTION	IMAGE	PART #	DESCRIPTION
	125608	Battery stick with tail-cap		RB-300	Smart AC charger (120V/60Hz)*
	127243	Belt holder		RB-300DC	12V DC charger
	CC-365	Hard carrying case		UVS-40	Fluorescence-enhancing spectacles, yellow

*Also available in 230V, 240V, and 100V versions



Rechargeable NiMH Battery



Bright & Uniform Beam



Instant-on Operation



90 Minutes Run Time



Works In Daylight!



PATENTED, THIN-FILM DICHOIC LENS
Improve contrast and fluorescent response

ANODIZED ALUMINUM LAMP BODY

Minimizes corrosion and stands up to years of heavy use

CONVENIENT ON/OFF SWITCH

For easy one-handed operation

CHARGE STATUS INDICATOR LIGHT

ELECTRONIC INTENSITY STABILIZER

Assures consistent performance



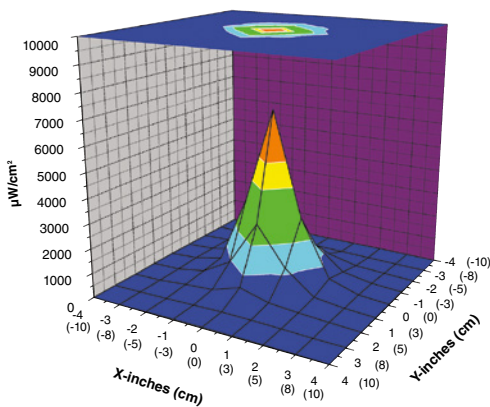
OPTIMAX™ 450 Flashlight Kit

Comes complete with OPTIMAX™ 450 LED blue light lamp, smart AC and DC chargers, fluorescence-enhancing yellow spectacles, belt holder and rugged, hard carrying case.

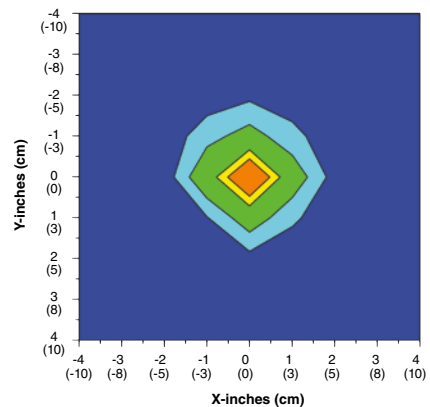
KIT #
OPX-450

Blue Light Beam Profiles

Surface Contour Profile at 15 in (38 cm)



Top Intensity Profile at 15 in (38 cm)



PowerMAX™ 450

LED Blue Light Flood Panel Lamp

The **PowerMAX™ 450** flood lamp features a panel of 16 powerful blue light (450 nm) LEDs specially engineered for nondestructive testing applications when limiting the use of UV-A light is a requirement. This versatile, stationary light source can be installed overhead or in-line, and can be ganged together to provide an even wider coverage area.

	PM-1600B
Nominal Steady-State Blue Light Intensity at 15 in (38 cm) Φ	10,000 $\mu\text{W}/\text{cm}^2$
Blue Light Coverage Area at 15 in (38 cm) at minimum 2,000 $\mu\text{W}/\text{cm}^2$	18 x 8 in (46 x 20 cm)
Cooling System	Built-in fan

Technical Features

Light Source:	(16) Blue light LEDs
Lamp Style:	Panel flood lamp
Dimensions: (L x W x H)	13.75 x 5.5 x 6 in (35 x 14 x 15 cm)
Weight:	9 lb (4 kg)
Power Requirements:	AC power (main AC power cord supplied with the unit) (Available in 120V, 230V, 240V and 100V versions)

Φ Blue Light intensity reading taken with the Spectroline® AccuMAX™ Series meter, and is factory set to the value shown.



Replacement Parts and Accessories










IMAGE	PART #	DESCRIPTION
	127918	Particulate air filter
	127935	Retainer LED assembly faceplate
	128177	AC power cord
	CC-200	Connector cable for ganging lamps
	CP-100	Top connecting plate for ganging lamps longitudinally

IMAGE	PART #	DESCRIPTION
	CP-200	Top connecting plate for ganging lamps back-to-back (2 required)
	CP-300	Side connecting bracket for ganging lamps longitudinally (2 required)
	DF-450PM	Dichroic filter assembly
	UVS-40	Fluorescence-enhancing spectacles, yellow



Very Broad Coverage Area



Cool Running



Large Parts Inspection



Customizable/
Gangable



BUILT-IN FANS
Maintains optimum light output

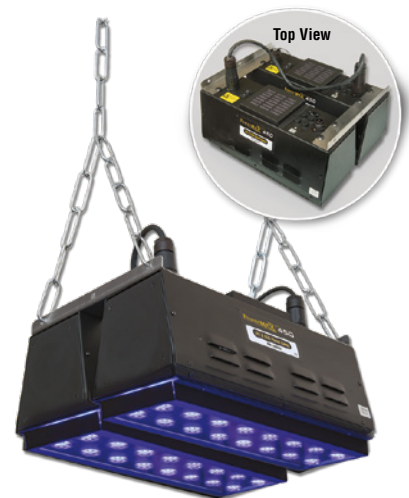
EASILY MOUNTABLE
For overhead inspection or in-line applications

PATENTED, THIN-FILM DICHROIC LENS
Improve contrast and fluorescent response

16 BLUE LIGHT LEDS
Provide large area of coverage



For applications requiring extremely large coverage area, the PowerMAX™ 450 can be quickly ganged together longitudinally (left) or back-to-back (right) using customized, easy-to-install connecting plates and brackets.



MAXIMA™ 3500 SERIES

Ultra-High-intensity UV-A Lamps

These super-powerful **MAXIMA™ 3500 SERIES** lamps make NDT inspections easy. They feature micro discharge light (MDL) technology with a fatigue-free ergonomic design. Deliver up to 10 times the UV-A output of conventional HID inspection lamps. They have a lightweight, solid-state ballast and integral bulb/reflector assembly. Stay-cool, impact-resistant and dent-proof housing. Prefocused at the factory.

	ML-3500S	ML-3500FL	ML-3500MS
Nominal Steady-State UV-A Intensity at 15 in (38 cm) Ⓞ	50,000 $\mu\text{W}/\text{cm}^2$	5,700 $\mu\text{W}/\text{cm}^2$	50,000 $\mu\text{W}/\text{cm}^2$
UV-A Coverage Area at 15 in (38 cm) at minimum 1,200 $\mu\text{W}/\text{cm}^2$	6 in (15 cm) Diameter		
Ultra-High-intensity Output	✓		
Reflector Assembly	Spot reflector	Flood/anodized reflector	Spot reflector
Battery-Powered, Mobile Model	✗		✓

Ⓞ UV-A intensity reading taken with the Spectroline® AccuMAX™ Series meter, and is factory set to the value shown.

*These versions are adjusted to ensure that they provide a maximum steady-state UV-A intensity of less than 5,000 $\mu\text{W}/\text{cm}^2$ at 15 in (38 cm)



Replacement Parts and Accessories

IMAGE	PART #	DESCRIPTION	IMAGE	PART #	DESCRIPTION
	119584	MDL bulb, 35 watt		BLE-35RA	MDL bulb/coated spot reflector assembly
	2F350	UV diffusing filter		BLE-35RAF	MDL flood bulb/reflector assembly
	2F958	UV filter		BLE-36PRA	MDL bulb/polished spot reflector assembly

NOTE: All models come standard with 8 foot (2.4 m) primary and secondary cords



Ultra-High-Intensity Output



Extra Wide Coverage



Very Bright Beam



Works In Daylight!



INTEGRAL BULB
Reflector assembly

STAY-COOL
Impact-resistant and dent-proof housing

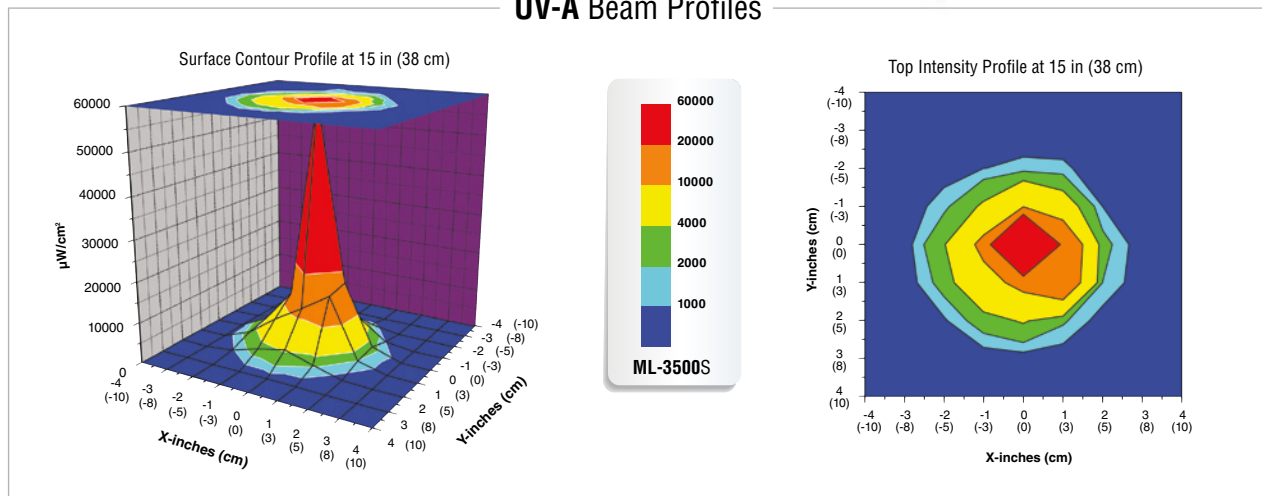
LIGHTWEIGHT
Solid-state ballast

INSTANT ON/OFF/RESTRIKE
Grip-mounted, three-way rocker switch



ML-3500MS

UV-A Beam Profiles



SUPERFLOOD™ SERIES

Our Most Powerful UV-A Flood Lamps

The super-powerful and versatile **SUPERFLOOD™ SERIES** has been specially engineered for fluorescent penetrant and magnetic particle inspection, parts degreasing inspections and wash station inspections. Powerful 400-watt metal halide bulb, combined with tempered, heat-resistant low solarization UV filters provide the highest intensity over the largest area.

TWIN-FILTER SYSTEM

Eliminates hazardous UV-B and UV-C radiation escaping from lamp

POWERFUL

400-watt metal halide bulb with tempered, heat-resistant low solarization UV filters



EASY BUILT-IN MOUNT

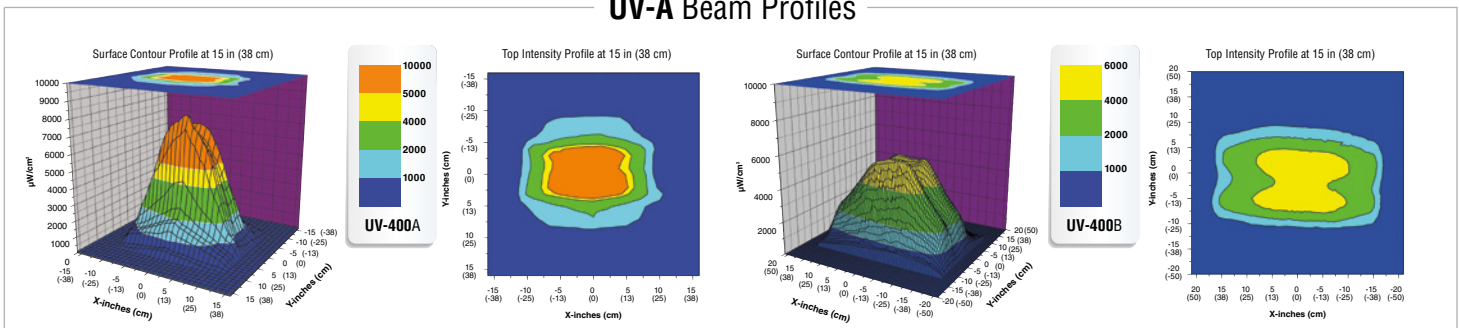
Attach unit over automated magnetic particle systems or above penetrant inspection booths

	UV-400A	UV-400B
Nominal Steady-State UV-A Intensity at 15 in (38 cm) Ⓞ	8,000 $\mu\text{W}/\text{cm}^2$	5,000 $\mu\text{W}/\text{cm}^2$
UV-A Coverage Area at 15 in (38 cm) at minimum 2,000 $\mu\text{W}/\text{cm}^2$	16 x 10 in (41 x 25 cm)	27 x 15 in (69 x 38 cm)
UV-A Coverage Type	Features a concentrated-beam reflector designed to assure the highest concentrated UV-A intensity available	Features a unique broad-beam reflector designed to provide NDT inspectors with maximum uniformity of coverage over the largest area

Ⓞ UV-A intensity reading taken with the Spectroline® AccuMAX™ Series meter, and is factory set to the value shown.



UV-A Beam Profiles



VIVID™ Replacement Bulb

- ▶ UV-A LED replacement bulb
- ▶ Convert your mercury vapor HID lamp to modern LED technology
- ▶ Use with Spectroline® HID lamps instead of mercury vapor bulb!



Instant-on Operation
No wait time to get to full intensity



Fewer Bulb Changes



Safer
Over 50% cooler!
225°F vs. 109°F
(HID) (LED)



Environmental
Less environmental waste with fewer bulbs and energy efficient



BLE-LED-100



BLE-LED-150

INCLUDES BULB EXTENDER* for BIB-150P lamps (120V)

P/N *129585



BLE-LED-150/F

INCLUDES BULB EXTENDER* for BIB-150P/F lamps (230V)

P/N *130245

Part #	Nominal Steady-State UV-A Intensity at 15 in (38 cm)	UV-A Coverage Area at 15 in (38 cm) at minimum 1,200 μW/cm²	Visible Light Measurement
BLE-LED-100 BLE-LED-150 BLE-LED-150/F	4,700 μW/cm² (tested with 2F958 filter)	4.5 in (12 cm) Diameter	< 1 foot-candle (11 lux)



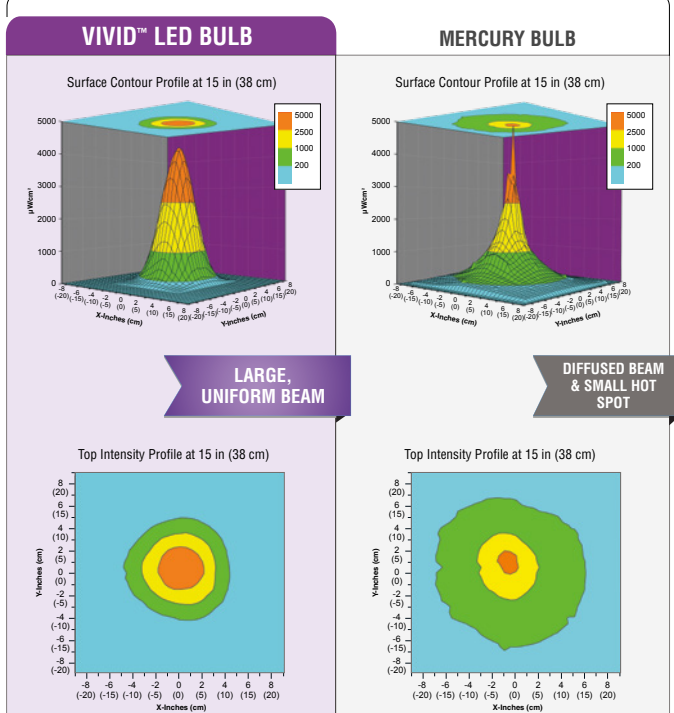
Works **seamlessly** in conjunction with the following Spectroline® HID lamps, saving you *both* time and money on bulb changes:

Lamp	Current Bulb Type	Replacement Vivid Bulb
SB-100P SERIES	100S/M HID Bulb	BLE-LED-100
FC-100 SERIES	100S/M HID Bulb	
BIB-150P SERIES	BLE-150CS-115/M	BLE-LED-150
	BLE-150BS-115/M	
	BLE-150CS-100/M	
BIB-150P/F SERIES	BLE-150CS-230/M	BLE-LED-150/F
FC-150/F SERIES	BLE-150FC-230/M	

COMES WITH PATENTED BULB-SAVER™

Keeps bulb upright in housing and maintains alignment through usage, increasing longevity.

VIVID™ -VS- MERCURY BULB COMPARISON



AccuPRO™ SERIES

Digital Radiometer/Photometers

The **AccuPRO™ XP-2000** readout unit features a single dual-wavelength sensor detector designed to measure both ultraviolet and visible light, and is compliant with ASTM 2297. The **AccuPRO™ Plus XP-4000** features a single 3-in-1 multi-purpose sensor that measures ultraviolet, visible, and blue light.



KEY FEATURES:

- ▶ Overall accuracy greater than $\pm 5\%$ per NIST standards
- ▶ Superior band-pass interference filter provides excellent cosine response
- ▶ One-touch PEAK with reset functions
- ▶ User-defined power save and automatic shutoff
- ▶ Multi-wavelength sensor directly attached to meter by 3 ft (0.9 m) cord
- ▶ Convenient on-board recharging
- ▶ Powered by four rechargeable “AAA” nickel-metal hydride batteries (included)
- ▶ Comes complete with AC charger and padded carrying case

UV-A LIGHT	VISIBLE LIGHT	BLUE LIGHT
XP-2000 XP-4000	XP-2000 XP-4000	XP-4000

MULTILINGUAL – now includes more languages. User-selectable, multilingual display settings at any operational level. Choose from English, French, German, Chinese, and Spanish.



Technical Features

Readout Unit	
Resolution	4-digit autoranging display
Screen	128 x 64 dot pixel chip on glass STN transmissive monochrome LCD 2.25 in (5.7 cm) diagonal illuminated (backlit)
Read Update	2 Hz
Overall Accuracy	Better than $\pm 5\%$ with reference to NIST standards
Temperature Coefficient	$\pm 0.025\%/^{\circ}\text{C}$ (0 to 50°C)
Power Requirements	Four "AAA" nickel-metal hydride batteries (rechargeable). AC charger included. <i>Available in 120V, 230V, 240V or 100V versions.</i>

Dimensions	
Length	6.0 in (15.2 cm)
Width	3.0 in (7.6 cm)
Thickness	1.0 in (2.5 cm)
Weight	8 oz (227 g)

Sensor Detector	
Length	3.0 in (7.6 cm)
Width	2.0 in (5.1 cm)
Thickness	0.5 in (1.3 cm)
Weight	5.6 oz (159 g)

Spectral Range	
UV-A Sensor	320-400 nm
Visible Sensor	460-675 nm
Blue Light Sensor	410-475 nm (XP-4000 only)

XP-2000 AccuPRO™
Dual Sensor (UV-A/VIS)
 Sensitive to UV and Visible Light

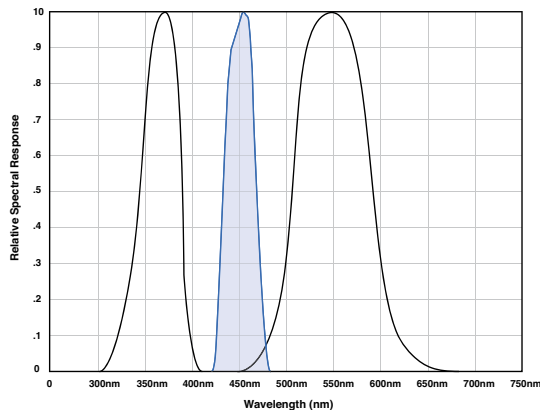
ASTM 2297
 Compliant

Wavelength/Measurement Range
 UV-A (365 nm) Irradiance 0-100 mW/cm²
 Visible (555 nm) Illuminance 0-5,382 Lux (0-500 fc)

XP-4000 AccuPRO™ Plus
3-in-1 Sensor (UV-A/VIS/Blue)
 Sensitive to UV, Visible and Blue Light

Conforms to
CEN/TR 16638

Wavelength/Measurement Range
 UV-A (365 nm) Irradiance 0-100 mW/cm²
 Visible (555 nm) Illuminance 0-5,382 Lux (0-500 fc)
 Blue (450 nm) 0-100 mW/cm²



The **AccuPRO™** meter features a dual wavelength UV/visible sensor, while the **AccuPRO™ Plus** (shown) features a 3-in-1 sensor that measures UV, visible and blue light.



AccuMAX™

Advanced Digital Radiometer/Photometer Kit

The MOST advanced, microprocessor-controlled readout system. The **AccuMAX™ XRP-3000** is compact, lightweight, and battery-operated for convenient use in the factory, field or any other location where measurements need to be taken. Measures both ultraviolet and visible light. Complies with ASTM specifications for MPI and FPI and the ASTM 2297 standard. Specially engineered for NDT applications.



KEY FEATURES:

- ▶ Microprocessor-controlled readout unit with dual-wavelength sensor detector
- ▶ Superior bandpass interference filter
- ▶ Choice of direct or USB connection between sensor detector and readout unit
- ▶ Excellent cosine response
- ▶ Sealed sensor housing and USB connection with water-resistant adapter

MULTILINGUAL – now includes more languages. User-selectable, multilingual display settings at any operational level. Choose from English, French, German, Chinese, and Spanish.



AccuMAX™ XS-555/L Luminance Sensor Detector

The perfect accessory for the AccuMAX meter. Ideal for technicians performing radiographic examinations. Meets ASTM E1742 standard.

The AccuMAX XS-555/L luminance sensor detector measures the brightness of a visible light source and, unlike many competitive units, allows the user the choice of displaying the results in three distinct units of measure: candelas per square meter (cd/m^2), candelas per square foot (cd/ft^2) and footlamberts (fL).



Dimensions

Height 3.2 in (8.1 cm)
 Length 3.0 in (7.6 cm)
 Width 2.1 in (5.3 cm)
 Weight 6.4 oz (181 g)

Luminance Range

0 - 1,000,000 cd/m^2
 0 - 90,000 cd/ft^2
 0 - 285,000 fL

Technical Features

Readout Unit (XR-1000)

Resolution	4-digit autoranging display
Screen	128 x 64 dot pixel chip on glass STN transmissive monochrome LCD 2.25 in (5.7 cm) diagonal illuminated (backlit)
Sample Rate	7.5 Hz (single sensor) 15 Hz (dual sensor)
Read Update	2 Hz
Overall Accuracy	Better than $\pm 5\%$ with reference to NIST standards
Temperature Coefficient	$\pm 0.025\%/^{\circ}\text{C}$ (0 to 50°C)
Power Requirements	Two non-rechargeable 9V alkaline battery cells are included as standard

Dimensions

Length	7.75 in (19.7 cm)
Width	4.25 in (10.8 cm)
Thickness	1.25 in (3.2 cm)
Weight	0.8 lb (360 g)

Dual UV-A/Visible Sensor Detector (XDS-1000)

Irradiance Range

UV-A Sensor	0-100 mW/cm^2 (0-100,000 $\mu\text{W}/\text{cm}^2$)
Visible Sensor	0-5,300 lux (0-500 fc)

Spectral Range

UV-A Sensor	320-400 nm
Visible Sensor	460-675 nm

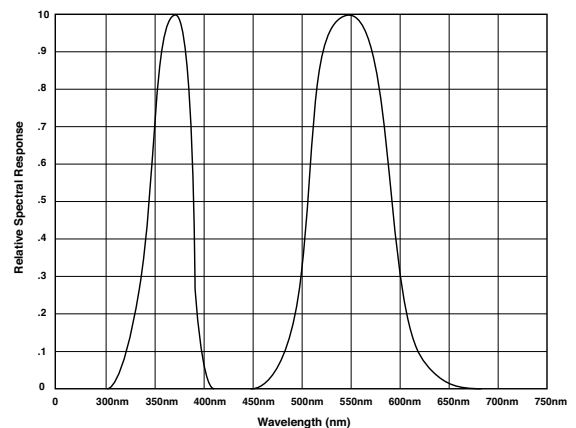
Dimensions

Length	4.75 in (12.1 cm)
Width	2.0 in (5.1 cm)
Thickness	7/8 in (2.2 cm)
Weight	0.22 lb (100 g)
USB Cable (Length)	5 ft (1.5 m)



XRP-3000 Kit Includes:

- Water-resistant USB cable with adapter XCB-100
- Rubber boot XRB-100
- Carrying case XCC-100



Sample Certificates of Conformance & Validation Reports

Our NDT inspection lamps come with unique Certificates of Conformance and Validation Reports, so end-users know that their lamps meet industry requirements and standards.

Intensity readings are taken with a Spectroliner® AccuMAX™ Series meter, and is factory set to the value shown.



We stay one step ahead of industry trends and technological innovation to ensure you get the most rugged, comfortable, compliant lamps available today.

SPECTROLINE®
Validation Report

MODEL NUMBER: TR1-36558LC SERIAL NUMBER: [REDACTED]
STANDARD: Rolls-Royce RRES 90061 PART NUMBER: [REDACTED]

TEST DESCRIPTIONS	PARAMETERS	TYPE TEST	NOMINAL	UNIT TEST
Minimum Working Distance	1.05m (36.1")	NA	1.1m (36.1")	NA
Maximum Working Distance	2.30m (7.55")	NA	2.30m (7.55")	NA
Peak Wavelength	365 +/- 5 nm	367 +/- 2 nm	367 +/- 2 nm	365 +/- 2 nm
50% Max Iir < 20 mm	10 +/- 1 nm	10 +/- 1 nm	10 +/- 1 nm	10 +/- 1 nm
50% Max Iir < 10 mm	12 +/- 1 nm	12 +/- 1 nm	12 +/- 1 nm	12 +/- 1 nm
50% Max Iir < 5 mm	12 +/- 1 nm	12 +/- 1 nm	12 +/- 1 nm	12 +/- 1 nm
50% Max Iir < 3 mm	12 +/- 1 nm	12 +/- 1 nm	12 +/- 1 nm	12 +/- 1 nm
50% Max Iir < 1.5 mm	10 +/- 1 nm	10 +/- 1 nm	10 +/- 1 nm	10 +/- 1 nm
Wavelength Drift	±0.5nm to 270nm	Acceptable	Acceptable	Acceptable
Visible Light Output	<0.1µW at Minimum Dist	2.45µW	2.55µW	2.45µW
Output Stability	Tx ± 20% Intensity drift	NA	5 Minutes	30 minutes
Operating Temperature	0 to 40 degrees C	25 degrees C	25 degrees C	50 degrees C
Source Life*	1000 - 2000 Initial Intensity	1000 - 1000	1000	NA
	1000 - 2000 Initial Intensity	1000/30 Hours	25,000 Hours	NA

Inspector: [Signature] Date: [REDACTED]

935 Brush Hollow Rd, Westbury, NY 11590 • PHONE: 516-333-4840 • FAX: 516-333-4859 • WWW.SPECTROLINE.COM

Rolls-Royce RRES 90061
Fully serialized Validation Reports provided with all RRES 90061 compliant lamps.

SPECTROLINE®
Certificate of Conformance

MODEL NUMBER: TR1-36558LC SERIAL NUMBER: [REDACTED]
STANDARD: ASTM E3022-18 Type A PART NUMBER: [REDACTED]

APPARATUS I.D.	MANUFACTURER	MODEL NUMBER
Spectrophotometer (6.1)	Spectronics Corporation	365nm (6.100)
Spectrophotometer (6.2)	Spectronics Corporation	365nm (6.100)
Spectrophotometer (6.3)	Spectronics Corporation	365nm (6.100)

TEST DESCRIPTIONS	PARAMETERS	REQUIREMENTS	AT AMBIENT: 77°F (25°C)
Maximum Intensity (7.2)	At 15 inches (38 cm)	4,300 - 4,700 mW/cm²	4,300
Intensity Spectrum (7.6.4.2)	Min range 300-600nm	See Figure 2.6 - Fig. 2	
Peak Wavelength (7.6.4.2)	360 +/- 7.0nm		
FWHM (7.6.4.2)	15nm		
Longest Wavelength at Half Maximum (7.6.4.2)	<377nm		
UV-A LED Visible Light (555nm) at 15 in. (38cm)	<2 nI (21 Lux)	Fc (Lux)	
Visible LED Light (555nm) at 15 in. (38cm)	>200 nI (2100 Lux)	Fc (Lux)	

Inspector: [Signature] Date: [REDACTED]

935 Brush Hollow Rd, Westbury, NY 11590 • PHONE: 516-333-4840 • FAX: 516-333-4859 • WWW.SPECTROLINE.COM

ASTM E3022-18
Certificates of Conformance as defined by ASTM E3022-18 standard for emission characteristics and requirements for LED UV-A lamps are supplied with each lamp.

SPECTROLINE®
Certificate of Light Output

This is to certify the below referenced item meets the UV-A Lamp Output Measurements (Intensity and Stability) for EN ISO 3059, providing a Peak Wavelength of 360 - 370 nm (365 ± 5 nm) as measured with a spectroradiometer, in accordance with EN ISO 3059:2012 requirements.

Product Name: **AccuMAX™ 365 AC/DC Series**
Product Number: [REDACTED]
Serial Number: [REDACTED]

The following light measurements were obtained using a Spectroliner® AccuMAX™ XR 1000 and 300-1000 nm, 15" (38 cm) with battery-operated light at full charge:

UV-A LED Measurement - Standard Setting
UV-A Intensity reading @ 365nm: 4,300 - 4,700 mW/cm²
Visible light reading @ 555nm: With clear filter: 0.2 - 0.46 (0.2 - 0.4 lux)
With black light filter: 0.2 - 0.46 (0.2 - 0.4 lux)

White Light LED Measurement
Visible light reading @ 555nm: High: 275 - 3500 (2960 - 3787 lux)
Visible light reading @ 555nm: Low: 7 - 150 (75.3 - 161.4 lux)

Inspector: [Signature] Date: [REDACTED]

935 Brush Hollow Rd, Westbury, NY 11590 • PHONE: 516-333-4840 • FAX: 516-333-4859 • WWW.SPECTROLINE.COM

EN ISO:3059 + Wavelength Compliance
Certificates of Light Output provided with each individual lamp with unique product serial number. These certify LED wavelength requirements and output measurements for each lamp at the factory.

ISO 9001:2015

Compliance with the new ISO standard reinforces the confidence that customers have in Spectronics Corporation's commitment to quality, not only in the present but also in the future.

Warranty

All equipment is warranted against defects in manufacture. Spectronics Corporation's obligation under this warranty is limited to repairing or replacing, at the option of Spectronics Corporation, any part(s) of the product which, if properly installed, used and maintained, proves upon factory examination to have been defective in materials or workmanship within 12 months from the date of delivery to the customer, including LEDs and BLE-LED bulb.

This warranty does not apply to any component which (1) is normally consumed in operation or (2) has a normal life inherently shorter than the warranty stated. For example, bulb, filters and rechargeable batteries are warranted for 30 days; the 100S/M-PQL bulb is warranted for 90 days. In addition, Spectronics Corporation does not warrant any instrument that has been subjected to misuse, negligence or accident, or has been repaired or altered by anyone other than Spectronics Corporation.

This warranty is in place of all other warranties of quality. There are no other warranties either oral, written, express, implied or statutory. IMPLIED WARRANTIES OF FITNESS FOR PURPOSE AND MERCHANTABILITY ARE EXCLUDED. This warranty and your remedies thereunder are solely as stated in this form. In no event shall Spectronics Corporation be liable for special, indirect, incidental or consequential damages, nor for any damages arising out of delay in shipment or production.



Order Information



Technical Assistance



Local Sales Representatives



Authorized Distributors

Product/Customer Support & Technical Assistance

Product literature, instructions and a full staff of trained customer service representatives and technical service engineers are available for support. Additional product information and support are available on our website.



Place an Order:
Orders@Spectroline.com



Get Support:
CustomerService@Spectroline.com
 or call (516) 333-4840



See More:
 Scan QR Code

IMAGINING FOR TOMORROW:

We are excited to release several new, in-demand products very soon.

Have some feedback or product ideas? Please reach out – we would love to hear from you.

Email our team at marketing@spectroline.com

Company Background

Since 1955, Spectronics Corporation has been **the industry leader of inventing and manufacturing fluorescent dyes and materials**. More than six decades since its inception, the goal of Spectronics is still the same — to produce effective, top-quality products that are on the cutting edge of today's technology with the utmost dedication to customer satisfaction.

Our NDT product line is no exception. We have worked alongside NDT experts, engineers, product designers, and standards committee members to carefully develop our compliant lamps to meet the highest standards.



SPECTRONICS HEADQUARTERS, WESTBURY NY

THE WORLD LEADER IN **NDT FLUORESCENT** SURFACE INSPECTION



SPECTROLINE[®]
NDT

**SOLUTIONS FOR
NDT INSPECTION.**

PROUD MEMBERS OF:



 **SPECTRONICS**
CORPORATION
www.spectroline.com
956 Brush Hollow Rd, Westbury, NY 11590 USA
800-274-8888 • 516-333-4840



NDT
03/19 A18371-3
PRINTED IN USA

